



LAYOUT VIEW-2  
SCALE 1:500  
FOR CONTINUATION REFER DRG C71

- DRAWING REFERENCE NOTES**
- FOR LOCALITY PLAN AND DRAWING INDEX AND GENERAL NOTES REFER DRAWING C30
  - GENERAL ARRANGEMENT PLAN REFER DRAWING C01 AND C02
  - ROADWORKS PLAN REFER DRAWING C11 AND C12
  - FOR ROADWORKS INTERSECTION PLAN REFER DRAWINGS C21
  - FOR ROADWORKS LONGITUDINAL SECTIONS REFER DRAWING C31 AND C32
  - FOR ROADWORKS CROSS SECTIONS REFER DRAWINGS C41-C53
  - FOR TYPICAL ROAD CROSS SECTIONS REFER DRAWING C51
  - FOR STORMWATER DAMAGE PLAN REFER DRAWING C71 AND C72
  - FOR TYPICAL DETAILS REFER DRAWINGS C81-C85
  - FOR TYPICAL DETAILS REFER DRAWINGS C91 AND C92
  - FOR TRAFFIC CONTROL DETAILS REFER DRAWINGS C01
  - FOR SEDPP PLANS REFER DRAWINGS C11 AND C12

**LEGEND**

SYMBOL	DESCRIPTION
— 10.5 —	CONTOUR MAJOR 0.2m INTERVAL
— 0.5m —	CONTOUR MINOR 0.05m INTERVAL
× 261.88	EXISTING SPOT LEVELS
× 261.88	PROPOSED SPOT LEVELS
—	PROPOSED KERB AND WATER TABLE
—	PROPOSED KERB AND WATER TABLE
—	600 WIDE SPOON DRAIN

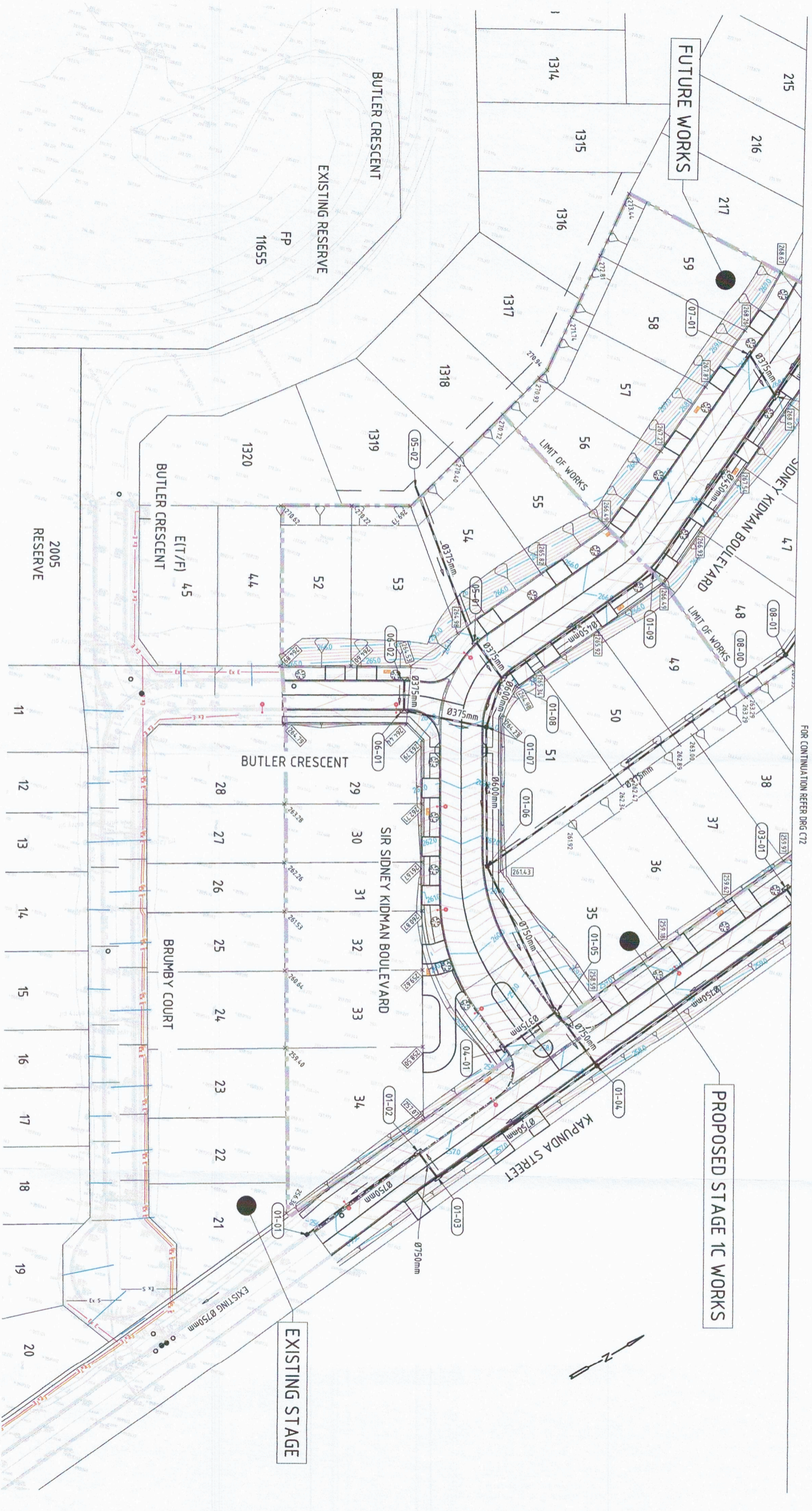
REV	DATE	AMENDMENT / REVISION DESCRIPTION	DRAFTER	APPROVAL
A	01.03.19	FOR INFORMATION	CS	BL
B	16.04.19	FOR APPROVAL	CS	BL
C	04.10.19	FOR INFORMATION	CS	BL
D	12.11.19	REVISED FOR INFORMATION	CS	BL
E	14.04.20	REVISED FOR APPROVAL	CS	BL

TITLE	NAME	DESIGNER
DRAFTER	BL	AD
DRAWING CHECK	CS	AD
DESIGNER	BL	AD
DESIGN CHECK	CS	AD
PROJECT MANAGER	CS	AD
PROJECT DIRECTOR	CS	AD

**NOT FOR CONSTRUCTION**

Address call charge  
ADELAIDE CIVIL DESIGN  
ABN 75 435 973 484  
PO BOX 44  
HENLEY BEACH S.A. 5072  
www.adelaidecivildesign.com.au

PROJECT TITLE	SCALE	PHASE	PROJECT / DRAWING No.	REVISION
FIVE SHILLINGS SUBDIVISION STAGE 1C CIVIL WORKS KAPUNDA STORMWATER DRAINAGE PLAN-2	AS NOTED	PRELIMINARY	ACD-14/143-C72	E



FOR CONTINUATION REFER DRG C72

- DRAWING REFERENCE NOTES**
1. FOR LOCALITY PLAN AND DRAWING INDEX AND GENERAL NOTES REFER DRAWING C00
  2. GENERAL ARRANGEMENT PLAN REFER DRAWING C01 AND C02
  3. ROADWORKS PLAN REFER DRAWINGS C1 AND C2
  4. FOR ROADWORKS INTERSECTION PLAN REFER DRAWING C1 AND C2
  5. FOR ROADWORKS LONGITUDINAL SECTIONS REFER DRAWING C31 AND C32
  6. FOR ROADWORKS CROSS SECTIONS REFER DRAWINGS C41-C53
  7. FOR TYPICAL ROAD CROSS SECTIONS REFER DRAWING C61
  8. FOR STORMWATER DRAINAGE PLAN REFER DRAWING C71 AND C72
  9. FOR TYPICAL DETAILS REFER DRAWINGS C81-C85
  10. FOR TRAFFIC CONTROL DETAILS REFER DRAWINGS C91 AND C92
  11. FOR TRAFFIC CONTROL DETAILS REFER DRAWINGS C91 AND C92
  12. FOR SEWER PLANS REFER DRAWINGS C111 AND C112

**LEGEND**

SYMBOL	DESCRIPTION
	CONTOUR MAJOR 0.2m INTERVAL
	CONTOUR MINOR 0.05m INTERVAL
	EXISTING SPOT LEVELS
	PROPOSED SPOT LEVELS
	MOUNTABLE KERB AND WATERTABLE
	MEDIUM ISLAND KERB
	600 WIDE SPOON DRAIN

LAYOUT VIEW -1  
SCALE 1:500

**NOT FOR CONSTRUCTION**

REV	DATE	REVISION / REVISION DESCRIPTION	DRAWN	APPROVAL	DATE	SCALE	PHASE	PROJECT / DRAWING NO.	REVISION
A	01.03.19	FOR INFORMATION	CS	BL	14. APR 2020	SCALE 1:500	AS NOTED	ACD-14/143-C71	E
B	16.04.19	FOR APPROVAL	CS	BL					
C	04.10.19	FOR INFORMATION	CS	BL					
D	12.11.19	REVISED FOR INFORMATION	CS	BL					
E	14.04.20	REVISED FOR APPROVAL	CS	BL					

TITLE	NAME	DESIGNER	CLIENT
DRAFTER	BL		
DRAWING CHECK	CS		
DESIGNER	BL	ADELAIDE CIVIL DESIGN	
DESIGN CHECK	CS	ADelaide Civil Design ABN 13 4 35 973 484 PO BOX 44 HENLEY BEACH S.A. 5022 www.adelaidecivil.com.au	
PROJECT MANAGER	CS		
PROJECT DIRECTOR	CS		

PROJECT TITLE	SCALE	PHASE	PROJECT / DRAWING NO.	REVISION
FIVE SHILLINGS SUBDIVISION STAGE 1C CIVIL WORKS KAPUNDA STORMWATER DRAINAGE PLAN-1	AS NOTED	PRELIMINARY	ACD-14/143-C71	E