

+ STAGE 1
 + STAGE 2A
 + STAGE 2B
 + STAGE 3

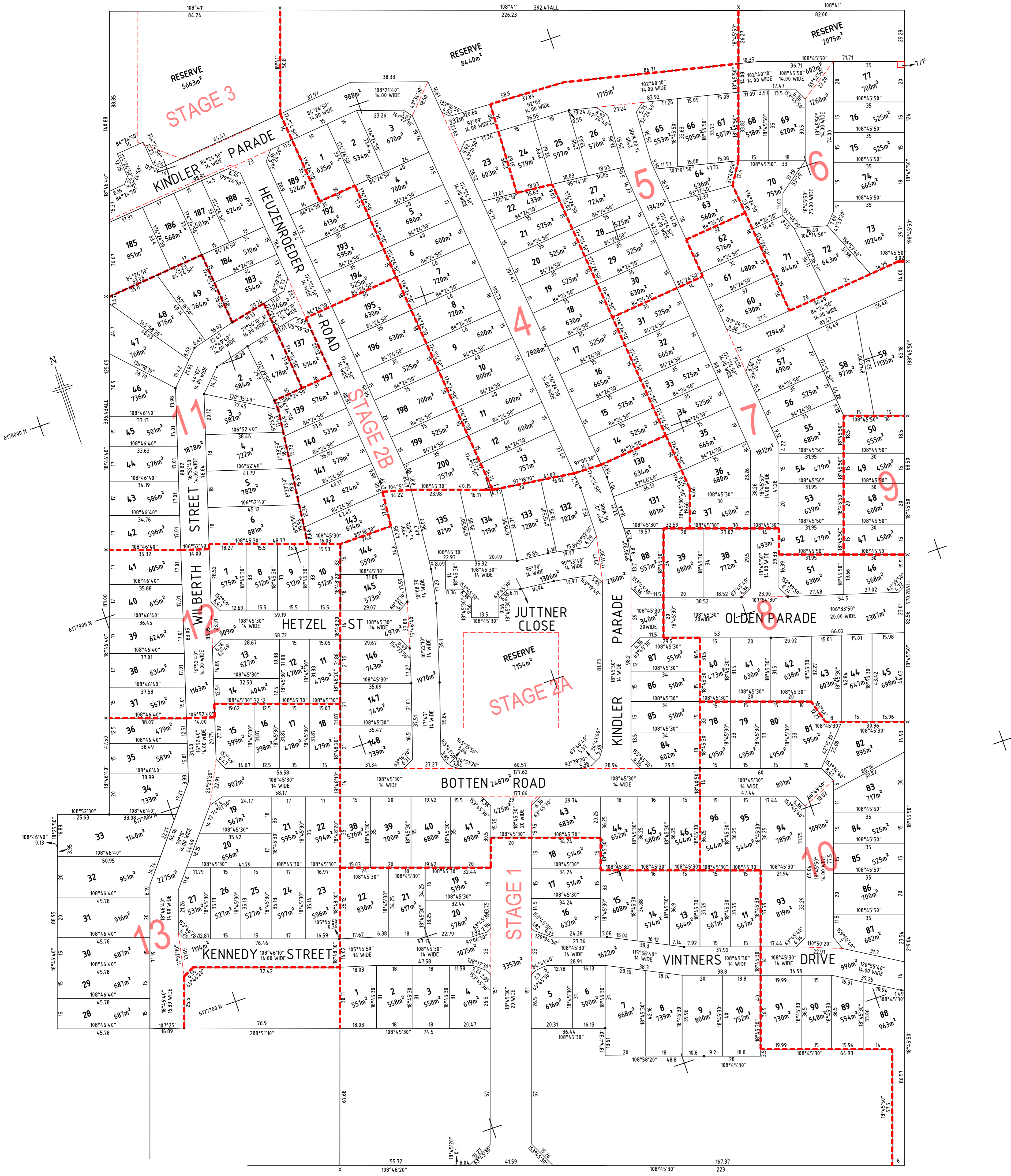
22
 24 +
 11
 11

STAGE 4
 STAGE 5
 STAGE 6
 STAGE 7

23
 12
 10
 16

STAGE 8
 STAGE 9
 STAGE 10
 STAGE 11
 STAGE 12
 STAGE 13

9
 4
 18
 14
 13
 22



**BASEDOW ROAD
 TANUNDA
 PEGGING PLAN**



Alexander & Symonds Pty Ltd
 11 King William Street Kent Town,
 South Australia 5067
 PO Box 1000 Kent Town, SA 5071
 SA 5071 ADN 93007 731 986
T F W E
 (08) 8130 1666
 www.alexanders.com.au
 alexander@alexanders.com.au

© ALEXANDER & SYMONDS PTY. LTD.

ORIGINAL SHEET SIZE A1

1:1000

COORDINATES: PROJECT

HEIGHT DATUM: DEL

DATE FILED: 22/10/2014

FLD/LVL BOOK: CHECKED:

| REV | DATE | DESCRIPTION | ADDITIONS, AMENDMENTS AND APPROVALS |
|-----|------------|---|-------------------------------------|
| A | 5/02/2015 | LOTS 1, 22 & 23 | |
| B | 12/02/2015 | LOTS 19 TO 22 | |
| C | 11/01/2021 | LOTS 4, 5 & 6 | |
| D | 15/01/2016 | STAGES 2A, 2B & 3 ADDED | |
| E | 15/01/2016 | STAGES 4 TO 10 ADDED | |
| F | 6/06/2016 | STAGE 2A - LOTS 4, 43, 87, 88, 132, 145, 146, 148 | |
| G | 8/06/2016 | STAGE 3 - LOTS 157, 183, 188 & 189 | |
| H | 13/07/2016 | STAGE 2B - LOT 200 | |
| I | 6/10/2016 | STAGE 2A - LOTS 135, 145 TO 148 | |
| J | 8/03/2017 | LOTS 84 TO 87 | |
| K | | | |
| L | | | |
| M | | | |
| N | | | |
| O | | | |
| P | | | |
| Q | | | |

SHEET
 DRAWING No. 20A2751CAD-TANUNDA REV Q
 Q